



Wayne  
County  
Community  
College  
District

## PAY

The median annual wage of interpreters and translators was \$44,190 in May 2015.

## JOB OUTLOOK

Employment of interpreters and translators is projected to grow 29 percent from 2014 to 2024, much faster than the average for all occupations. Employment growth will be driven by increasing globalization and by large increases in the number of non-English-speaking people in the United States. Job prospects should be best for those who have professional certification.

*Bureau of Labor Statistics, U.S. Department of Labor, Occupational Outlook Handbook, 2016-17 Edition, Interpreters and Translators, on the Internet at <http://www.bls.gov/ooh/media-and-communication/interpreters-and-translators.htm>*

# American Sign Language Interpretation

## ABOUT THE PROGRAM

The American Sign Language Interpretation Associate of Applied Science Degree and Short-Term Certificate program at Wayne County Community College District provides language training and cultural enrichment for people who wish to learn American Sign Language and the uniqueness of deaf culture. This program will not prepare students to become interpreters but is designed to introduce students to the language and culture. This program is a complement to other degrees and is particularly useful for parents of deaf children and students pursuing careers such as allied health, nursing, early childhood education and teaching, where clients may be deaf.

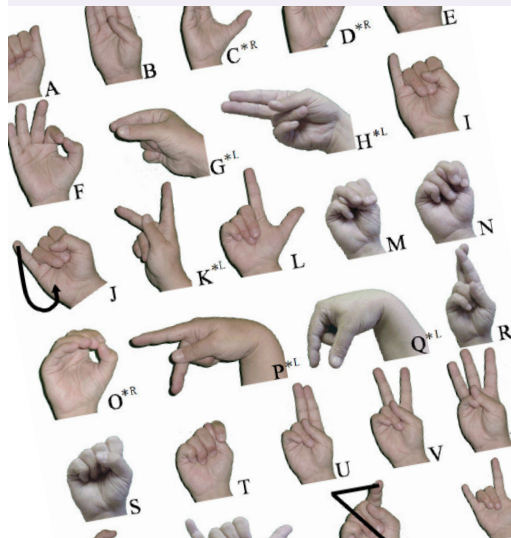


## WHAT DO SIGN LANGUAGE INTERPRETERS DO?

Interpreters and translators convert information from one language to another. Interpreters work in spoken or sign language, translators in written language.

## WHERE DO THEY WORK?

Interpreters work in settings such as schools, hospitals, courtrooms, and conference centers. Many translators work from home. Both interpreters and translators who are self-employed frequently have variable schedules.



**Wayne County Community College District....  
Jobs for Today, Jobs for the Future!**

**FOR MORE INFORMATION, CALL 313-496-2600  
OR VISIT OUR WEBSITE AT WWW.WCCCD.EDU**

## Recommended Sequence of Courses

### American Sign Language Interpretation: Associate of Applied Science

CR. No.	COURSE TITLE	CREDITS
<b><u>SEMESTER 1</u></b>		
ASL 100	American Sign Language I . . . . .	3
ASL 110	Introduction to Deaf Culture . . . . .	3
ASL 115	Beginning Finger Spelling and Number Use . . . . .	2
SOC 100	Introduction to Sociology . . . . .	3
ENG 119	English I . . . . .	3
<b>SEMESTER TOTAL . . . . .</b>		<b>14</b>

### **SEMESTER 2**

ASL 105	Orientation to Deafness . . . . .	3
ASL 120	American Sign Language II . . . . .	3
ASL 130	Intermediate Finger Spelling and Number Use . . . . .	2
PS 101	American Government . . . . .	3
SPH 101	Fundamentals of Speech . . . . .	3
<b>SEMESTER TOTAL . . . . .</b>		<b>14</b>

### **SEMESTER 3**

ASL 125	Interpreting I . . . . .	3
ASL 150	Principles of Interpreting . . . . .	3
ASL 200	American Sign Language III . . . . .	3
<b>SEMESTER TOTAL . . . . .</b>		<b>9</b>

### **SEMESTER 4**

ASL 220	American Sign Language IV . . . . .	3
ASL 225	Interpreting II . . . . .	3
ASL 230	Structure of American Sign Language . . . . .	3
ASL 270	Topics in Interpreting . . . . .	1
PSY 101	Introductory Psychology . . . . .	3
<b>SEMESTER TOTAL . . . . .</b>		<b>13</b>

### **SEMESTER 5**

ASL 250	Interpreting III . . . . .	3
ASL 260	Interpreting and Transliterating . . . . .	3
ASL 299	Sign Internship . . . . .	1
ANT 154	Introduction to Cultural Anthropology . . . . .	3
<b>SEMESTER TOTAL . . . . .</b>		<b>10</b>
<b>A.A.S. PROGRAM TOTAL . . . . .</b>		<b>60</b>

*Note: Program total hours may not include prerequisites.*

### American Sign Language Interpretation: Short-Term Certificate

CR. No.	COURSE TITLE	CREDITS
<b><u>SEMESTER 1</u></b>		
ASL 100	American Sign Language I . . . . .	3
ASL 110	Introduction to Deaf Culture . . . . .	3
ASL 115	Beginning Finger Spelling and Number Use . . . . .	2
ENG 119	English I . . . . .	3
<b>SEMESTER TOTAL . . . . .</b>		<b>11</b>

### **SEMESTER 2**

ASL 105	Orientation to Deafness . . . . .	3
ASL 120	American Sign Language II . . . . .	3
ASL 130	Intermediate Finger Spelling and Number Use . . . . .	2
SPH 101	Fundamentals of Speech . . . . .	3
<b>SEMESTER TOTAL . . . . .</b>		<b>11</b>

### **SEMESTER 3**

ASL 125	Interpreting I . . . . .	3
ASL 150	Principles of Interpreting . . . . .	3
<b>SEMESTER TOTAL . . . . .</b>		<b>6</b>
<b>CERTIFICATE TOTAL . . . . .</b>		<b>28</b>

*Note: Certificate total hours may not include prerequisites.*