



Wayne
County
Community
College
District

Electrical Electronics Engineering Technology

ABOUT THE PROGRAM

Today's workforce needs to be responsive to the increasing request from more and more employers that are seeking individuals with diverse skill sets. Oftentimes, the jobs that lead to a high skill, high wage, high demand career require postsecondary education and training.

Wayne County Community College District offers an Associate of Applied Science in Electrical Electronics Engineering Technology as well as four Certificate Degree options. These programs prepare our students for a wide range of job opportunities including; installation



and maintenance of electronic equipment in manufacturing, research, development, medicine and communications, while preparing students for International Society of Certified Technician (ISCET) certification exams.

WHAT DO ELECTRICAL ELECTRONICS TECHNICIANS DO?

The Industrial Electronics and Control Technology Concentration, Associate of Applied Science degree program is ideal for students interested in pursuing careers working with the latest electronic, computer and industrial control technologies. This challenging program provides an exceptionally strong foundation in electronics theory supported by extensive hands-on experience through accompanying labs. Topics include amplifier and digital circuitry, programmable logic, robotics, microprocessors, instrumentation, simulation, troubleshooting and industrial automation. Real world theory and applications are emphasized throughout the program.

WHERE DO THEY WORK?

Electrical and electronics installers and repairers install, repair, or replace a variety of electrical equipment in telecommunications, transportation, utilities, and other industries. Industrial Electronics Technology graduates are employed in the design, testing, installation, and troubleshooting of industrial process control systems, robotics devices, communications systems and sophisticated instrumentation throughout the world.

*For more information about our graduation rates, the median debt of students who have completed this program, and other important gainful employment information, please click the following link:
<http://www.wcccd.edu/dept/EEEngTech/EEEngTech.html>*

PAY

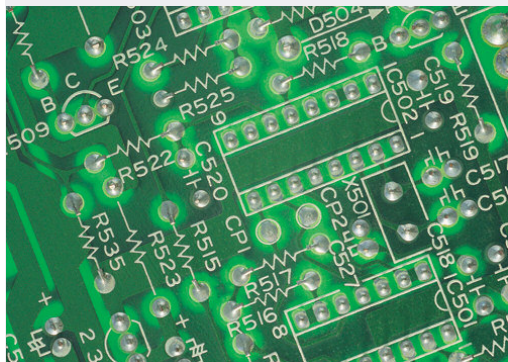
The median annual wage for electrical and electronics installers and repairers was \$55,160 in May 2015.

JOB OUTLOOK

Overall employment for electrical and electronics installers and repairers is projected to decline from 2014 to 2024. However, growth rates will vary by specialty. Job opportunities should be excellent for qualified workers with an associate's degree in electronics along with certification.

Bureau of Labor Statistics, U.S. Department of Labor, Occupational Outlook Handbook, 2016-17 Edition, Electrical and Electronics Installers and Repairers, on the Internet at <http://www.bls.gov/ooh/installation-maintenance-and-repair/electrical-and-electronics-installers-and-repairers.htm>

Approved by the Federal Aviation Administration (FAA) as a Technical Operations Collegiate Training Initiative (CTI) Program.



Recommended Sequence of Courses

Electrical Electronics Engineering Technology: College Certificate

CR. No.	COURSE TITLE	CREDITS
SEMESTER 1		
CT 203	Digital Logic I	4
EE 101	Circuit Analysis I	4
EE 105	Electronics Fabrication and Design . .2	
EE 107	Mathematics for Electrical/ Electronics I	4
ENG 119	English I	3
SEMESTER TOTAL		17

SEMESTER 2

CT 205	Introduction to Microprocessors . .4	
EE 102	Circuit Analysis II	4
EE 111	Solid State Fundamentals	3
EE 115	Mathematics for Electrical/ Electronics II	4
SEMESTER TOTAL		15

EEE TECHNOLOGY

CERTIFICATE TOTAL32

Note: Certificate total hours may not include prerequisites.

Electrical Electronics Engineering Technology: Associate of Applied Science Degree (A.A.S.)

CR. No.	COURSE TITLE	CREDITS
SEMESTER 1		
CT 203	Digital Logic I	4
EE 101	Circuit Analysis I	4
EE 105	Electronics Fabrication and Design	2
EE 107	Mathematics for Electrical/ Electronics I	4
ENG 119	English I	3
SEMESTER TOTAL		17

SEMESTER 2

CT 205	Introduction to Microprocessors . .4	
EE 102	Circuit Analysis II	4
EE 111	Solid State Fundamentals	3
EE 115	Mathematics for Electrical/ Electronics II	4
SEMESTER TOTAL		15

SEMESTER TOTAL15

SEMESTER 3

EE 205	Linear Integrated Circuits	2
Elective:	Natural Science	3
MCT 203	Electrical Machinery and Controls	3
TCM 200	Introduction to Telecommunications	3
TCM 203	Communications I	3
MCT 208	Programmable Logics Controllers . .3	
SEMESTER TOTAL		17

SEMESTER TOTAL17

SEMESTER 4

Elective:	Electronics (E/E)	5
Elective:	Humanities	3
ENG 120	English	3
PHY 235	General Physics I	4
PS 101	American Government	3
SEMESTER TOTAL		18

SEMESTER TOTAL18

EEE TECHNOLOGY

A.A.S. PROGRAM TOTAL67

Note: Program total hours may not include prerequisites.