



Wayne  
County  
Community  
College  
District

# Light Rail Engineering Technology: Railroad Rules and Safety

## PAY

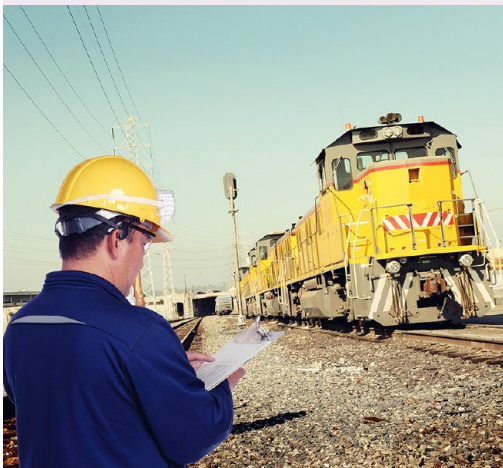
The median annual wage for all railroad occupations was \$55,180 in May 2015.

## JOB OUTLOOK

Employment of railroad workers is projected to decline from 2014 to 2024. Although demand for rail transportation may grow, an increase in productivity may hold employment growth in rail occupations.

However, job opportunities for these occupations are expected to be favorable in the Detroit Metropolitan area as the light rail system becomes operational.

*Bureau of Labor Statistics, U.S. Department of Labor, Occupational Outlook Handbook, 2016-17 Edition, Railroad Occupations, on the Internet at <http://www.bls.gov/ooh/transportation-and-material-moving/railroad-occupations.htm>*



## ABOUT THE PROGRAM

The Light Rail Engineering Technology: Railroad Rules and Safety certificate is designed to prepare the student to work within the expanding passenger and freight railroad industry. Railroads employ a substantial workforce to service, maintain, operate and manage their transportation networks. While railroads are required by federal law to train their own employees, the basic safety concerns, rules, orders and regulations are all standardized in the industry. Students in this program will be exposed to these issues and be prepared to pass the standardized rail examinations required by each rail industry employer. Students will find employment with freight railroads, and passenger or light rail operations in railcar or track maintenance, dispatch, signaling, and many other related positions.



## WHAT DO LIGHT RAILROAD SAFETY WORKERS DO?

Workers in railroad occupations ensure that passenger and freight trains run on time and travel safely. Some workers drive trains, some coordinate the activities of the trains, while others operate signals and switches in the rail yard.

## WHERE DO THEY WORK?

Nearly all locomotive engineers; conductors and yardmasters; and brake, signal, and switch operators work in the rail transportation industry. Rail yard engineers work in rail transportation and also support activities for rail.

**Wayne County Community College District....  
Jobs for Today, Jobs for the Future!**

**FOR MORE INFORMATION, CALL 313-496-2600  
OR VISIT OUR WEBSITE AT WWW.WCCCD.EDU**

## Recommended Sequence of Courses

### Light Rail Engineering Technology:

#### Railroad Rules and Safety: Short-Term Certificate

CR. No.	COURSE TITLE	CREDITS
---------	--------------	---------

#### **SEMESTER 1**

LRT 101	Rail Transportation and Railroad Careers . . . . .	3
BUS 150	Introduction to Business . . . . .	3
CIS 110	Introduction to Computer Information Systems . . . . .	4

**SEMESTER TOTAL . . . . .10**

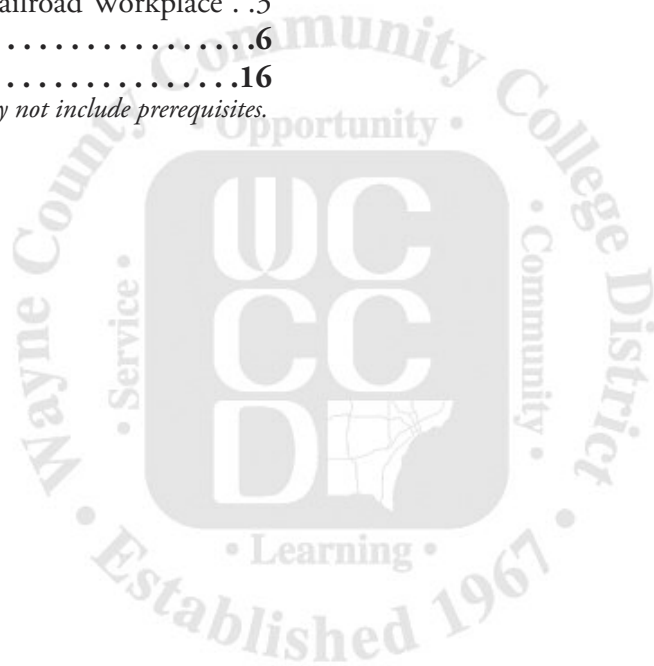
#### **SEMESTER 2**

LRT 102	Railroad Rules, Regulations, Standards and Practices . . . . .	3
LRT 201	Safety in the Railroad Workplace . .	3

**SEMESTER TOTAL . . . . .6**

**CERTIFICATE TOTAL . . . . .16**

*Note: Certificate total hours may not include prerequisites.*



*It is the policy of WCCCD that no person, on the basis of race, color, religion, national origin, age, sex, height, weight, marital status, disability, or political affiliation or belief, shall be discriminated against, excluded from participation in, denied the benefits of, or otherwise be subjected to discrimination in employment or in any program or activity for which it is responsible or for which it receives financial assistance from the U.S. Department of Education.*

*This document is for informational use only and does not constitute a contract. WCCCD reserves the right to add or delete, without notice, any course offering or information contained in this document. 2/19/07*