

Wayne County Community College District

Pavement Maintenance 2025

Downriver Campus



New Asphalt

1. Inspect the existing asphalt, assess site conditions, utilities and catch basins
2. Remove existing asphalt pavement, and curbing and depose of debris off-site.
3. Excavate unsuitable sub-grade materials as needed, and regrade to ensure proper drainage.
4. Replace damaged catch basins
5. Compact sub-grade as necessary for stable base.
6. Install aggregate base material and compact
7. Install appropriate layers of asphalt (Base and surface layers)
8. Apply parking lot striping, associated markings

New Concrete

1. Inspect the existing concrete, assess site conditions, utilities and catch basins
2. Remove existing concrete pavement, and curbing and depose of debris off-site.
3. Excavate unsuitable sub-grade materials as needed, and regrade to ensure proper drainage.
4. Replace damaged catch basins
5. Compact sub-grade as necessary for stable base.
6. Install base material and compact
7. Install appropriate layers of concrete (Base and surface layers)
8. Apply parking lot striping, associated markings (as necessary)

Crack Filling

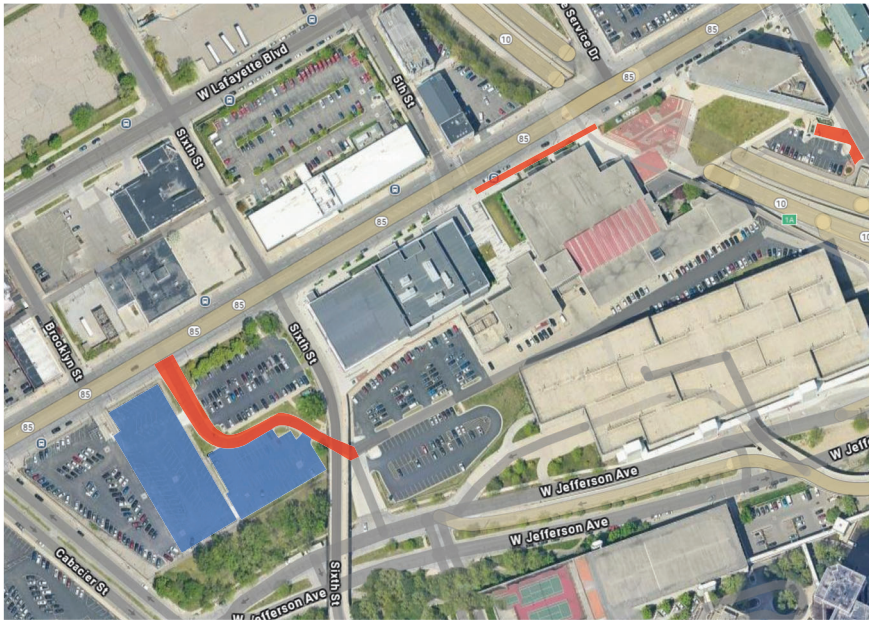
1. Open pavement cracks are to be mechanically routed, blown clean with compressed air and seal cracks with hot rubber joint sealant.
2. Thoroughly power clean pavement surface; apply minimum of THREE (3) coats of polymer modified master seal.
3. Include required oil spot priming , grass and weed removal.
4. Remove all loose materials, install and tamp compressed
5. Cold patch asphalt.

PROJECT NAME: WCCCD PAVEMENT MAINTENANCE 2025	2/14/25
Enter address here SHEET NAME: DOWNRIVER CAMPUS	

Wayne County Community College District

Pavement Maintenance 2025

Downtown Campus



■ Concrete Replacement ■ Asphalt Replacement

New Asphalt

1. Inspect the existing asphalt, assess site conditions, utilities and catch basins
2. Remove existing asphalt pavement, and curbing and dispose of debris off-site.
3. Excavate unsuitable sub-grade materials as needed, and regrade to ensure proper drainage.
4. Replace damaged catch basins
5. Compact sub-grade as necessary for stable base.
6. Install aggregate base material and compact
7. Install appropriate layers of asphalt (Base and surface layers)
8. Apply parking lot striping, associated markings

New Concrete

1. Inspect the existing concrete, assess site conditions, utilities and catch basins
2. Remove existing concrete pavement, and curbing and dispose of debris off-site.
3. Excavate unsuitable sub-grade materials as needed, and regrade to ensure proper drainage.
4. Replace damaged catch basins
5. Compact sub-grade as necessary for stable base.
6. Install base material and compact
7. Install appropriate layers of concrete (Base and surface layers)
8. Apply parking lot striping, associated markings (as necessary)

Crack Filling

1. Open pavement cracks are to be mechanically routed, blown clean with compressed air
2. Seal cracks with hot rubber joint sealant.
3. Thoroughly power clean pavement surface; apply minimum of THREE (3) coats of polymer modified master seal.
4. Include required oil spot priming , grass and weed removal.
5. Remove all loose materials, install and tamp compressed
6. Cold patch asphalt.

PROJECT NAME: WCCCD PAVEMENT MAINTENANCE 2025	2/14/25
Enter address here SHEET NAME: DOWNTOWN CAMPUS	

Wayne County Community College District

Pavement Maintenance 2025

Northwest Campus



■ Concrete Replacement

■ Asphalt Replacement

New Asphalt

1. Inspect the existing asphalt, assess site conditions, utilities and catch basins
2. Remove existing asphalt pavement, and curbing and dispose of debris off-site.
3. Excavate unsuitable sub-grade materials as needed, and regrade to ensure proper drainage.
4. Replace damaged catch basins
5. Compact sub-grade as necessary for stable base.
6. Install aggregate base material and compact
7. Install appropriate layers of asphalt (Base and surface layers)
8. Apply parking lot striping, associated markings

New Concrete

1. Inspect the existing concrete, assess site conditions, utilities and catch basins
2. Remove existing concrete pavement, and curbing and dispose of debris off-site.
3. Excavate unsuitable sub-grade materials as needed, and regrade to ensure proper drainage.
4. Replace damaged catch basins
5. Compact sub-grade as necessary for stable base.
6. Install base material and compact
7. Install appropriate layers of concrete (Base and surface layers)
8. Apply parking lot striping, associated markings (as necessary)

Crack Filling

1. Open pavement cracks are to be mechanically routed, blown clean with compressed air
2. Seal cracks with hot rubber joint sealant.
3. Thoroughly power clean pavement surface; apply minimum of THREE (3) coats of polymer modified master seal.
4. Include required oil spot priming , grass and weed removal.
5. Remove all loose materials, install and tamp compressed
6. Cold patch asphalt.

PROJECT NAME: WCCCD PAVEMENT MAINTENANCE 2025	2/14/25
Enter address here: SHEET NAME: NORTHWEST CAMPUS	

Wayne County Community College District Pavement Maintenance 2025 Ted Scott Campus



■ Concrete Replacement ■ Asphalt Replacement

New Asphalt

1. Inspect the existing asphalt, assess site conditions, utilities and catch basins
2. Remove existing asphalt pavement, and curbing and depose of debris off-site.
3. Excavate unsuitable sub-grade materials as needed, and regrade to ensure proper drainage.
4. Replace damaged catch basins
5. Compact sub-grade as necessary for stable base.
6. Install aggregate base material and compact
7. Install appropriate layers of asphalt (Base and surface layers)
8. Apply parking lot striping, associated markings

New Concrete

1. Inspect the existing concrete, assess site conditions, utilities and catch basins
2. Remove existing concrete pavement, and curbing and depose of debris off-site.
3. Excavate unsuitable sub-grade materials as needed, and regrade to ensure proper drainage.
4. Replace damaged catch basins
5. Compact sub-grade as necessary for stable base.
6. Install base material and compact
7. Install appropriate layers of concrete (Base and surface layers)
8. Apply parking lot striping, associated markings (as necessary)

Crack Filling

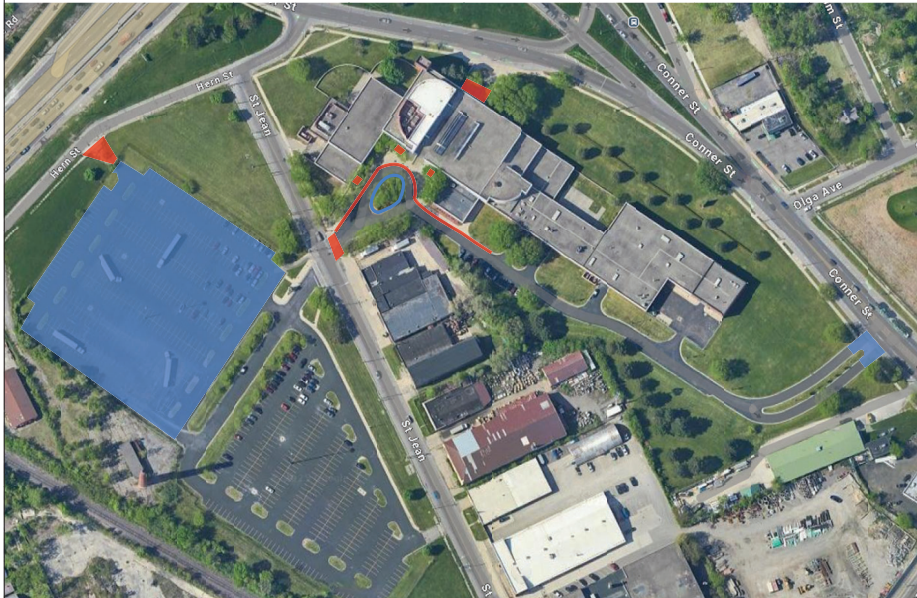
1. Open pavement cracks are to be mechanically routed, blown clean with compressed air
2. Seal cracks with hot rubber joint sealant.
3. Thoroughly power clean pavement surface; apply minimum of THREE (3) coats of polymer modified master seal.
4. Include required oil spot priming , grass and weed removal.
5. Remove all loose materials, install and tamp compressed
6. Cold patch asphalt.

PROJECT NAME: WCCCD PAVEMENT MAINTENANCE 2025	2/14/25
Enter address here SHEET NAME: TED SCOTT CAMPUS	

Wayne County Community College District

Pavement Maintenance 2025

Eastern Campus



■ Concrete Replacement

■ Asphalt Replacement

New Asphalt

1. Inspect the existing asphalt, assess site conditions, utilities and catch basins
2. Remove existing asphalt pavement, and curbing and dispose of debris off-site.
3. Excavate unsuitable sub-grade materials as needed, and regrade to ensure proper drainage.
4. Replace damaged catch basins
5. Compact sub-grade as necessary for stable base.
6. Install aggregate base material and compact
7. Install appropriate layers of asphalt (Base and surface layers)
8. Apply parking lot striping, associated markings

New Concrete

1. Inspect the existing concrete, assess site conditions, utilities and catch basins
2. Remove existing concrete pavement, and curbing and dispose of debris off-site.
3. Excavate unsuitable sub-grade materials as needed, and regrade to ensure proper drainage.
4. Replace damaged catch basins
5. Compact sub-grade as necessary for stable base.
6. Install base material and compact
7. Install appropriate layers of concrete (Base and surface layers)
8. Apply parking lot striping, associated markings (as necessary)

Crack Filling

1. Open pavement cracks are to be mechanically routed, blown clean with compressed air
2. Seal cracks with hot rubber joint sealant.
3. Thoroughly power clean pavement surface; apply minimum of THREE (3) coats of polymer modified master seal.
4. Include required oil spot priming, grass and weed removal.
5. Remove all loose materials, install and tamp compressed
6. Cold patch asphalt.

PROJECT NAME: WCCCD PAVEMENT MAINTENANCE 2025	2/14/25
Enter address here SHEET NAME: EASTERN CAMPUS	

Wayne County Community College District

Pavement Maintenance 2025

University Center Campus



■ Concrete Replacement ■ Asphalt Replacement

New Asphalt

1. Inspect the existing asphalt, assess site conditions, utilities and catch basins
2. Remove existing asphalt pavement, and curbing and dispose of debris off-site.
3. Excavate unsuitable sub-grade materials as needed, and regrade to ensure proper drainage.
4. Replace damaged catch basins
5. Compact sub-grade as necessary for stable base.
6. Install aggregate base material and compact
7. Install appropriate layers of asphalt (Base and surface layers)
8. Apply parking lot striping, associated markings

Crack Filling

1. Open pavement cracks are to be mechanically routed, blown clean with compressed air
2. Seal cracks with hot rubber joint sealant.
3. Thoroughly power clean pavement surface; apply minimum of THREE (3) coats of polymer modified master seal.
4. Include required oil spot priming , grass and weed removal.
5. Remove all loose materials, install and tamp compressed
6. Cold patch asphalt.

PROJECT NAME: WCCCD PAVEMENT MAINTENANCE 2025	2/14/25
Enter address here SHEET NAME: UNIVERSITY CENTER	